



125KHz USB Reader (Keyboard emulator)

Model No. WRD-130-LF

Frequency: 125KHz

Interface : USB - Keyboard emulator / HID/USB CDC (Visual Serial Port)

Option for RS232 / UART in TTL level / I2C

Supply voltage : USB Port (3 - 7 VDC)

Dimension : 70x112x23 mm

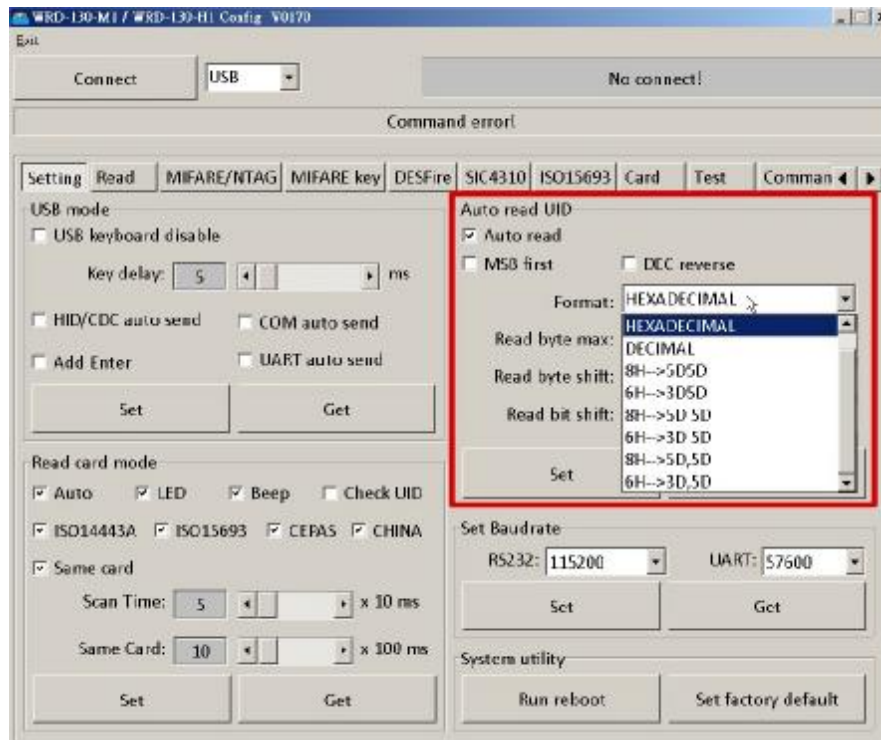
Description :

With the function as USB Interface, Reader WRD-130-LF series is a reading function, which is applicable for 125KHz card, such as EM4100,EM4200....etc.

It can read the unique serial number and there are a variety of output formats to choose from.

For Window 、 iOS 、 Android 、 Linux

Config tool





The specification is preliminary and subject to change without notice.

2K1601 WC13P10 V1.0

Wingsafe Technology Inc.

TEL:(886)-2-2945-8966

FAX:(886)-2-294-8086

More Information, Please contact wingsafe@gmail.com